

# MAROHN TKE

曼隆蒂升商用自动人行道  
Commercial Autowalk

MAC  
series

12° MAC H 最大 7.4M,  
11° MAC H 最大 6.8M,  
10° MAC H 最大 6.2M  
梯级宽度 800 毫米 - 1,000 毫米  
速度 0.5 米 / 秒

Moving Towards Future

# 曼隆蒂升电梯，您未来生活的明智之选。

Marohn TK Elevator, Your smart choice for future life.

这是一个最具工匠精神的德国制造典范。

It is an example of German manufacturing at its most artisan.

2020年，老牌电梯工业巨头蒂森克虏伯迎来了升级焕新，华丽转型为一家独立公司——蒂升。

In 2020, the old elevator industry giant ThyssenKrupp Elevator ushered in an upgrade, Transformation into an independent company - TKE.



客户遍布国家

100+



销售额（亿欧元）

80



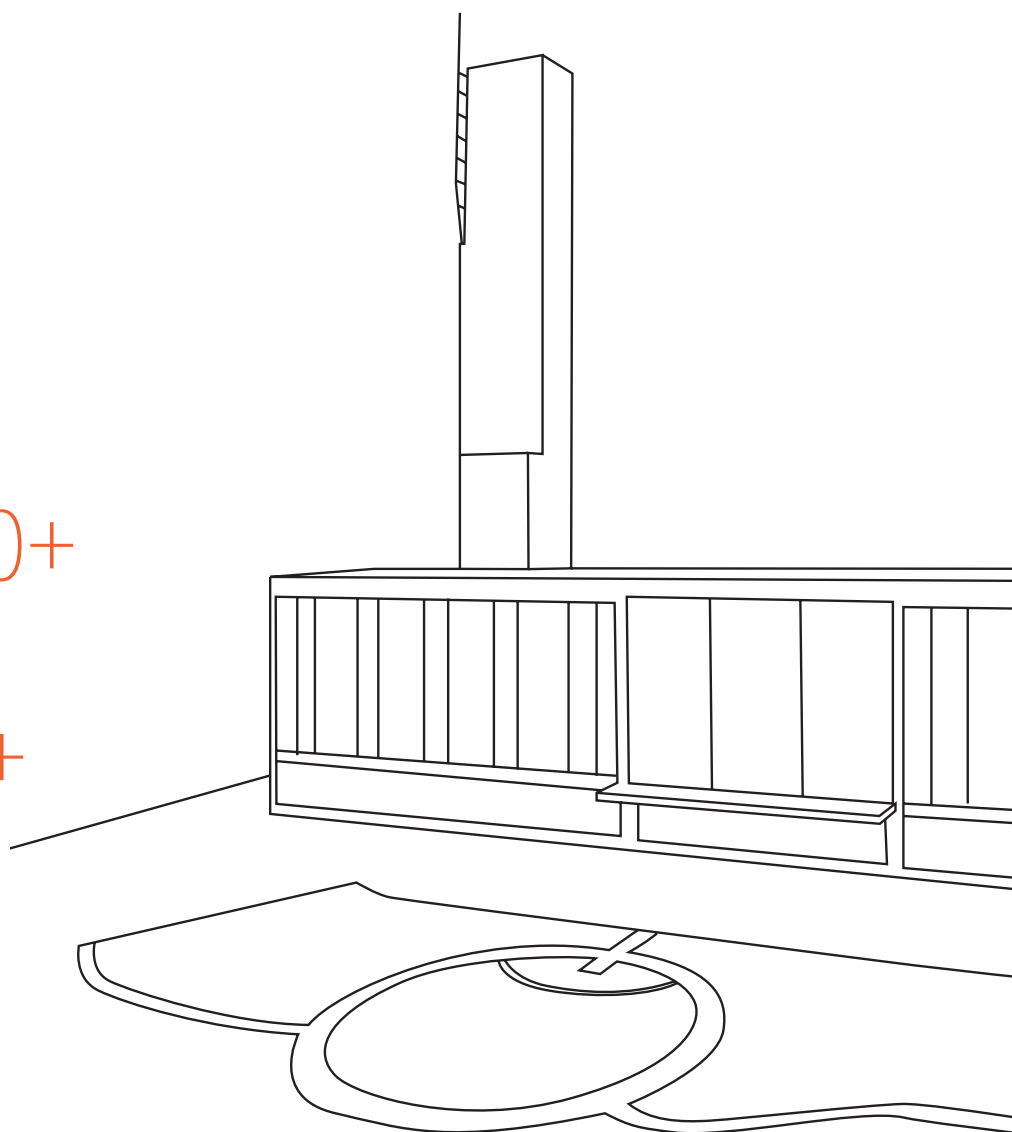
员工人数

50,000+



销售及维保网点

1,000+



# 愿景与使命

Vision and mission

我们以“缔造智选电梯，助推城市化浪潮”为愿景，致力于在飞速发展的城市化进程中为人们提供安全、顺畅、舒适的体验。

With the vision of "creating intelligent elevators and promoting the wave of urbanization", we are committed to providing people with a safe, smooth and comfortable experience in the rapidly developing urbanization process.

安全  
Safety



高效  
Efficient



专业  
Professional



## 传承德国匠心 还原德国品质

Inherit the German artisan spirit,  
dedicate to the German quality.

曼隆蒂升电梯是由 TK Elevator International Holding B.V. 控股的现代化电梯整机制造企业。

Marohn TK Elevator is a specialized elevator manufacturer held by TK Elevator International Holding B.V.

自 2011 年启用“MAROHN”这一传统德国品牌进入中国市场以来，我们致力于创造贴近市场和客户需求的产品和服务解决方案。

Since entered into China market with the traditional German brand “MAROHN” in 2011, We are committed to creating products and service solutions that are close to the market and customer needs.



MAROHN TKE

# 我们的历史 (源自 19 世纪的蒂森克虏伯)

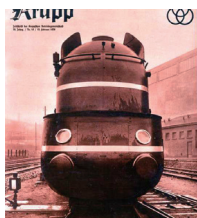
## Our History (Originated in the 19<sup>th</sup> century)

蒂森克虏伯过去 200 多年的技术、管理和全球市场经验，为曼隆蒂升 (曼隆蒂森) 电梯提供了保持全球领先的重要资本。ThyssenKrupp has more than 200 years of experience in technology, management and global markets, It provides important capital for Marohn TKE (formerly Marohn ThyssenKrupp) elevator to maintain the global leadership.

<p>1847</p> <p>铁路的兴建为铸钢创造了无限的商机。尤其是在 Alfred Krupp (Friedrich Krupp 之子) 成功获得无缝轮毂的专利后，克虏伯工厂迎来了首次发展狂潮。</p>  <p>Railway construction created unlimited business opportunities for cast steel. Especially after Alfred Krupp (son of Friedrich Krupp) successfully obtained the patent for seamless railway, this triggered Krupp's first surge of growth.</p>	<p>1871</p> <p>August Thyssen 成立了蒂森有限公司，后又在杜伊斯堡建立了第一家采煤与炼钢轧钢的联合企业。</p>  <p>August Thyssen established the firm of Thyssen &amp; Co., then set up the first joint enterprise with coal mining, steel making and steel rolling in Duisburg.</p>	<p>1956</p> <p>通过不断收购与兼并，蒂森成为了 20 世纪 60 年代欧洲最大的粗钢生产商，位列当时全球第五。</p>  <p>Through acquisition and merger, in the mid-1960s Thyssen became Europe's biggest steel producer and No.5 in the world.</p>	<p>1976</p> <p>蒂森通过并购成立新的蒂森股份公司，建立了资本货物生产、贸易与服务、不锈钢生产和钢铁生产四大业务板块，同时在标识中加入了莱茵钢铁公司的弧形元素。</p>  <p>Thyssen set up new Thyssen AG through merger, and established four business groups Capital Goods and Manufactured Products, Trading and Services, Stainless Steel, and Steel. Thyssen incorporated the arch of Rheinstahl into the trademark.</p>	<p>2009</p> <p>受全球金融危机影响，蒂森克虏伯将各子公司的业务单元进行重组。公司标识上的文字和图标的联系更加紧密，并形成一个新的统一架构。</p>  <p>Affected by the global financial crisis, thyssenkrupp restructured the business and the text and icon on the trademark were closer, which formed a brand new logo.</p>
<p>1811</p> <p>Friedrich Krupp 在德国埃森创立了一间工厂，用于制造铸钢、铸币工具、压印模和不锈钢制管模具。</p>  <p>Friedrich Krupp established a factory in Essen, Germany for making of cast steel, coining die and stainless steel pipe mould.</p>	<p>1859</p> <p>来自普鲁士军事局的枪管锭订单为克虏伯的第二大主产业奠定了坚实的基础。不久后，克虏伯更开启了全新的火炮产业。</p>  <p>The gun barrel ingot order from the Prussian military authorities was a breakthrough in the development of Krupp's second major production segment. Shortly afterwards Krupp started production of complete artillery.</p>	<p>1875</p> <p>Alfred Krupp 确立以三个叠加的火车轮毂作为克虏伯的公司标识。</p>  <p>Alfred Krupp chose three superposed railway tires as Krupp trademark.</p>	<p>1999</p> <p>克虏伯与蒂森全部全面合并。新公司标识中融合了蒂森弧形和克虏伯圆环的标志性元素。</p>  <p>thyssenkrupp AG is officially registered in Essen, German. The new trademark was a blend of old Thyssen arch and Krupp circle element.</p>	<p>2015</p> <p>蒂森克虏伯历经 200 年历史后迎来全新的品牌标识的统一与革新。新标识既包含了蒂森克虏伯的历史，同时标志的对称性和复杂性代表了精密的工程技术。</p>  <p>After 200 years history, thyssenkrupp ushered in the unity and innovation of its brand new logo. The new logo contained the history, the symmetry and complexity also represented the precision of technology.</p>

# 蒂森克虏伯的中国发展史

## thyssenkrupp in China



▶ 1886

克虏伯为修建京广铁路向中国供应了 1,500 吨铁路钢轨。此后又陆续将百余台蒸汽机车运往中国。

Krupp supplied 1,500t. of rail steels for the construction of Beijing-Guangzhou railway. Then it shipped more than one hundred locomotives to China.



▶ 1896

清总理大臣李鸿章受邀带领第一支中国代表团访问德国，中德的贸易序章正式拉开。

Li Hongzhang, the Prime Minister of Qing dynasty, was invited to visit Germany with the first Chinese delegation, which opened the prologue for the Sino-German trade.



▶ 1937

位于上海外滩的中国银行购入数百吨克虏伯钢材，用于制造保管箱和库门，创造了当时的“远东第一”银行。

The Bank of China which was located at Shanghai Bund procured hundreds of tons of Krupp steel to produce safe and vault door, making it the Far East No. 1 bank at the time.



▶ 1975

新中国成立后，蒂森公司和克虏伯公司参加了在京举办的德国技术展览会。周恩来总理会见了原克虏伯基金会主席 Berthold Beitz 博士。

After the founding of New China, Thyssen and Krupp company participated in the German technology exhibition held in Beijing. Premier Zhou Enlai met with Dr. Berthold Beitz, former chairman of Krupp foundation.



▶ 1995

国家主席江泽民在访德期间参观了克虏伯集团。

President Jiang Zemin made a tour to Krupp during his visit in Germany.



▶ 2002

德国总理施罗德与朱镕基总理进行会晤，并共同乘坐上海磁悬浮列车，见证由蒂森克虏伯创造的 430 公里/小时的速度奇迹。

German Chancellor Gerhard Schröder met with Premier Zhu Rongji, and took the Shanghai maglev train together, witnessing the miracle speed of 430km/h created by thyssenkrupp.



▶ 2014

国家主席习近平在德国杜塞尔多夫会见包括蒂森克虏伯首席执行官在内的中德经济交流顾问委员会成员。

President Xi Jinping met with the members of Sino-German Economic Exchange Advisory Committee in Dusseldorf, Germany, including the CEO of thyssenkrupp.

## 蒂升的最新电梯技术

### Advanced E&E technology of TKE

#### ACCEL

通过运用磁悬浮列车的线性马达技术，ACCEL 可方便乘客快速抵达地铁站。在机场航站楼，ACCEL 能将登机口之间的通行时间大幅缩短三分之二。

TKE's ACCEL provides an efficient solution by improving access to metro stations with linear motors technology applied in the magnetic train Transrapid. In airport terminals, it can cut current transit times between gates by two-thirds.

#### MAX

MAX 解决方案不仅能够缩短人们的候梯时间，提高建筑物的运输效率，从而缓解城市人口的增长压力，还可通过识别电梯的需求信息，逐步改变行业提供维保服务的方式。

Max solution can save the waiting time for elevator, enhance the transportation efficiency to ease stress of increasing urban populations. It also makes it possible to change the way the elevator industry offers maintenance services by identifying service needs elevator "tell".

#### TWIN

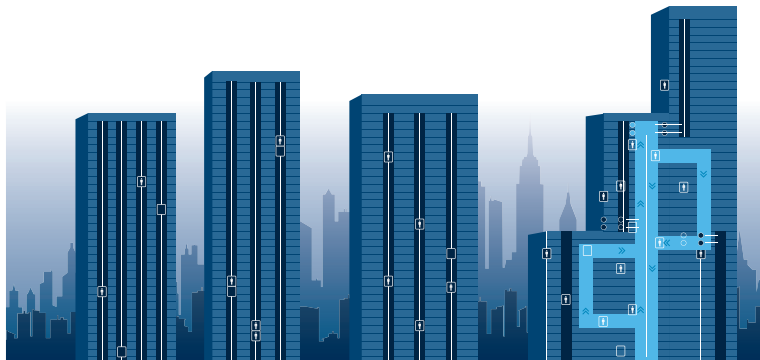
TWIN 双子电梯系统是世界上首个将两个轿厢独立运行于同一井道的电梯系统。目的楼层选择控制系统 (DSC) 能够优化交通流量，使乘客更快更安全地到达目的地。

Implemented for the first time anywhere in the world by thyssenkrupp, TWIN system uses two independent elevators in one shaft. The Destination Selection Control (DSC) system optimizes traffic flows and helps passengers reach their destination fast and safely.

#### MULTI

MULTI 电梯技术允许多台轿厢在同一个井道中进行垂直和水平移动，极大提升了建筑物在高度、形状和用途等方面的设计自由度。

MULTI elevator technology makes several cars in the same shaft moving vertically and horizontally, permitting buildings to adopt different heights, shapes, and purposes.



# MAC 商用自动人行道

## MAC Commercial Autowalk

曼隆蒂升按照欧洲工程质量标准制造自动人行道的驱动、链条与梯级系统，对所有人行道主要部件进行严格测试，确保可靠的质量。采用先进工艺，我们将减速箱的载荷分散在具有更大接触面积的啮合齿面上，减少摩擦的同时也令驱动效率更高，实现人行道的平稳运行。以高科技设计的控制柜，可对自动人行道运行的速度、方向、状态和参数进行实时监测，及时消除运行隐患，并可支持各种安全功能的实现。围裙板、内外盖板及楼层盖板精选耐用型材，令 MAC 经得住时间的考验。软停车功能，更能避免猛烈停车所造成的磨损。

Marohn TK Elevator manufactures the autowalk drive, chain and step system according to the European engineering quality standards and conduct strict testing for all the main parts to ensure the reliable quality.

With advanced technology, we disperse the load of reduction gearbox in the meshing tooth surfaces with larger contact area, which can reduce the friction and also improve the drive efficiency to realize the smooth running of the autowalk.

The control cabinet with high tech design can monitor the speed, direction, status and parameters of autowalk, timely eliminate the operational risks and support the implementation of a variety of safety functions.

The skirting, inner and outer deck as well as the floor deck adopt selected durable materials, so that the MSC can completely stand the test of time.

The soft stop function can further avoid the wear caused by violent parking.

我们经验丰富的团队，可根据建筑的不同结构以及客流的方向与强度，为您提供专业的产品分析、布置、选型和配置意见，推荐令您满意的最佳方案。

特殊设计的导轨支架由激光切割，可准确固定导轨，以压铆再次固定，有效防止由运输或震动引起的导轨移位。

在人行道入口处盖板上设置的地面楔型保护装置，既可保护扶手支撑玻璃，又不影响正常的客流的流通。

Our experienced team can provide you with professional product analysis, layout, series selection and configuration advices according to different building structure and the direction and intensity of people flow, to recommend the best solutions to you. The specially designed bracket, cut by laser, can accurately fix the rail and refasten with press riveting, which effectively prevent the displacement caused by transport or vibration.

The wedge ground protective device equipped on the deck of autowalk entrance, can protect the handrail supporting glass without affecting the normal people flow.

MAC 自动人行道除了完全符合国标 GB16899 的各项最新标准外，在此基础上更增加了多项安全配置，为您提供更贴心的保护。

驱动链断链保护，避免人行道因驱动链断链发生上行反向或下行加速运行时造成乘客跌倒甚至划伤。

供电相位保护作为 MAC 的又一项标准安全配置，进一步防止自动人行道逆转运行，保障乘客安全。

针对火灾，MAC 可根据要求设置 FAS 系统接口，在接收火警信号时制停人行道。

MAC is completely compliance with all the latest standards of the national GB16899. In addition, a number of security configurations are added to provide you with more considerate protection. We equip the autowalk with drive chain guard to avoid the upward reverse running or downward acceleration running due to the breakage of the drive chain and the falling or even scratching of the passengers.

The power supply phase protection is another standard security configuration of MAC, which can further prevent the reversal operation to ensure the safety of passengers.

For the fire, MAC can set the FAS system interface as required to stop the autowalk when receiving the fire alarm signal.



# 定制设计

## Customized design



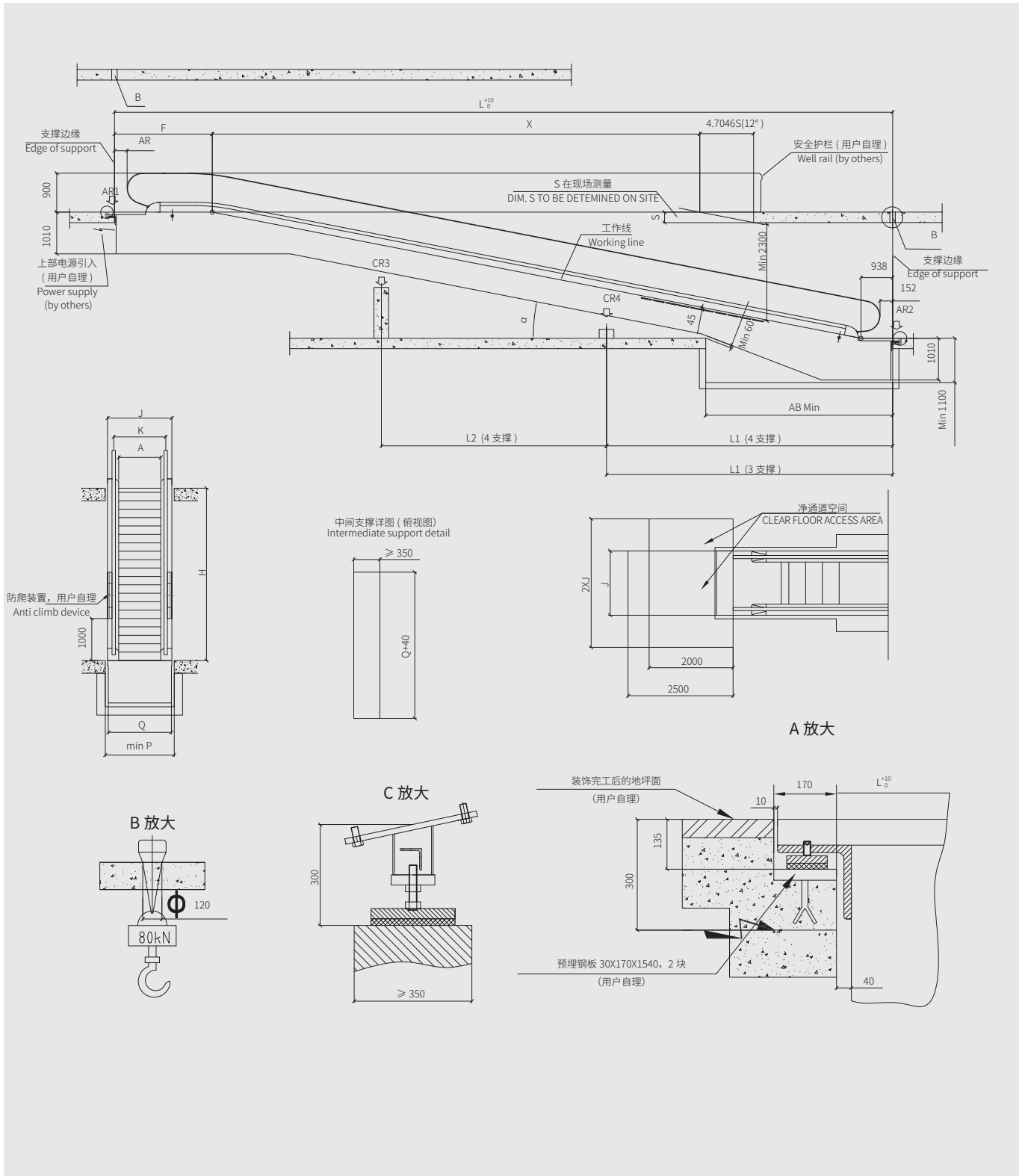
MAC  
series

兼具美观与功能，MAC 自动人行道为您带来更多选择的部件与组合方案，如扶手带和扶手带型材、内外盖板、梯级和梯级边框、扶手支撑玻璃、围裙板和围裙板毛刷等。不同颜色的照明选择，也为各类建筑营造出其专属的氛围。除了扶手带和围裙板照明以外，特殊的腹板照明和内部照明，都可成为发光设计的典范，为整个建筑环境增添活力。多款专业设计的扶手带集时尚耐用、美观大方于一身，流线型的扶手入口设计，在提升人行道美观度的同时，也可在异物带入时迅速做出反应。围裙板表面与梯级上方的毛刷，可有效防止乘客的衣物被夹；倾斜式的铝合金毛刷基座，防止儿童在基座上站立与攀爬，进一步保障了儿童的乘梯安全。

Combined aesthetics with practicality, MAC can bring you more choices of parts and combination, such as the handrail, handrail material, inner and outer deck, steps, step border, handrail support glass, skirting and skirting brush, etc. Lighting options with different colors also build an exclusive atmosphere for various buildings. Besides the handrail and skirting lighting, the special web and interior lighting can both become the paradigm of the luminous design and bring energy to the building. A variety of handrails with professional design integrates fashion, durability and elegance. The streamlined handrail entrance design enhances the aesthetics of the autowalk while making rapid response at the introduction of foreign bodies. The brush on the skirting surface and above the steps can prevent the passengers' clothing from being pinched. And the tilted aluminum alloy brush base can prevent children from standing or climbing on the base, which further protects the riding safety of children.

# 井道布置图 (10-12°单梯)

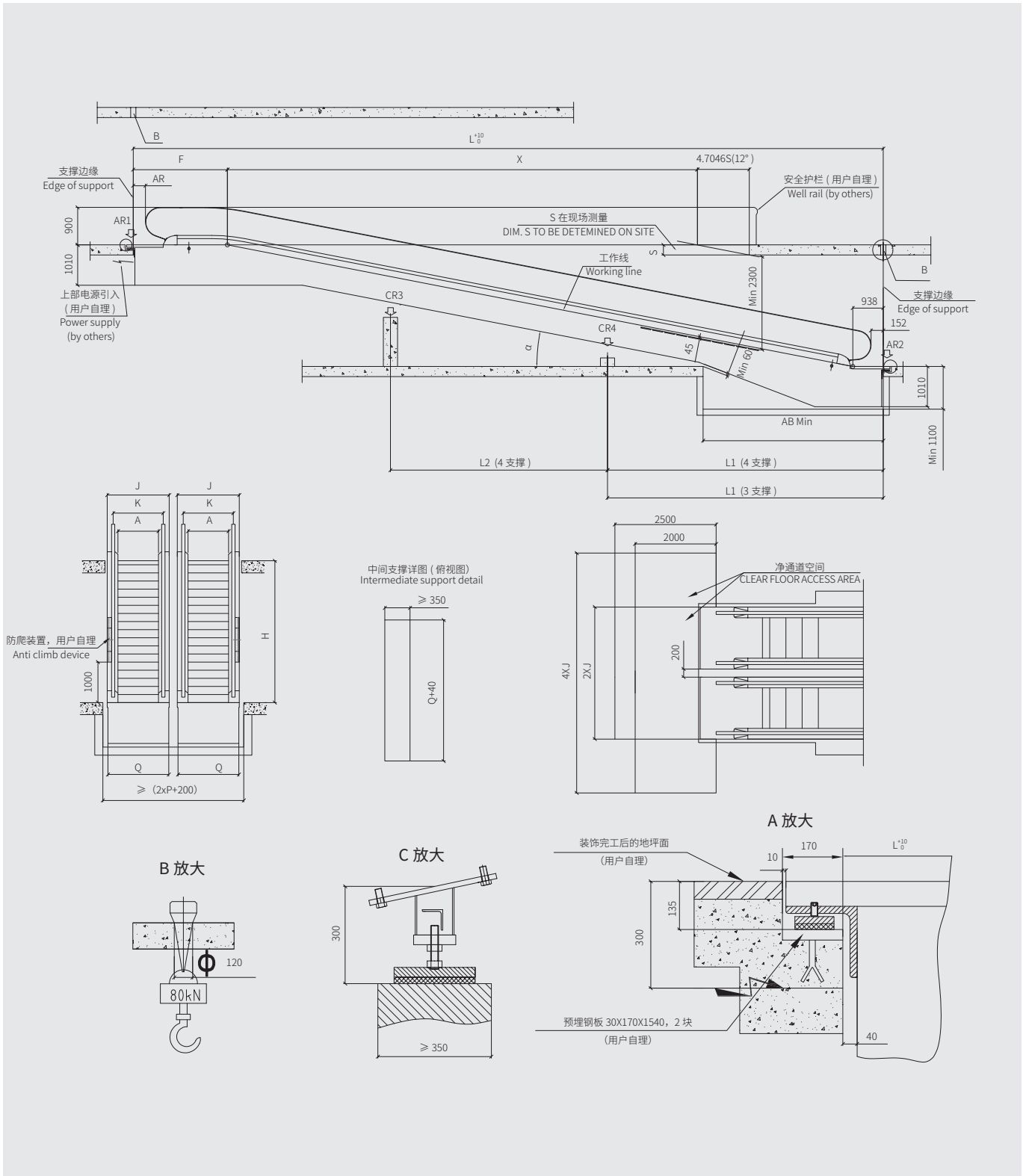
## Layout (10-12°single)





# 井道布置图 (10-12°并列)

## Layout (10-12°parallel)





# 技术规格表

## Technical specification

	m/s	mm	mm	mm	mm	mm	mm	mm	mm
倾斜角度 $\alpha$ Angle	速度 Speed	梯级宽度 A Step width	底坑长度 AB Length of pit	提升高度 H Rise	人行道外宽 J Width of autowalk	扶手带 中心间距 K Handrail center distance	底坑宽度 P Width of pit	桁架外宽 Q Width of supporting structure	支撑端间距 D Distance between supports (DBE)
10°	≤ 0.5	800	4750	1500 ≤ H ≤ 6200	1340	1038	1400	1300	5.6713*H+3156
	≤ 0.5	1000	4750	1500 ≤ H ≤ 6200	1540	1238	1600	1500	5.6713*H+3156
11°	≤ 0.5	800	4320	1500 ≤ H ≤ 6800	1340	1038	1400	1300	5.1446*H+3156
	≤ 0.5	1000	4320	1500 ≤ H ≤ 6800	1540	1238	1600	1500	5.1446*H+3156
12°	≤ 0.5	800	4040	1500 ≤ H ≤ 7400	1340	1038	1400	1300	4.7046*H+3202
	≤ 0.5	1000	4040	1500 ≤ H ≤ 7400	1540	1238	1600	1500	4.7046*H+3202

KN	mm	KN	KN	KN
支反力 Reactions	梯级宽度 A Step width	2 个支撑点 2 supporting points	3 个支撑点 3 supporting points	4 个支撑点 4 supporting points
A (RU/RD)	800	R1=L×q+M R2=L×q+N	R1=La×q+M R2=Lb×q+N	R1=La×q+M R2=Lb×q+N
A (RU/RD)	1000	R1=L×q+M R2=L×q+N	R1=La×q+M R2=Lb×q+N	R1=La×q+M R2=Lb×q+N
C (RM)	800	-	R3=(La+Lb)×1.3×q	R3=(La+Lc)×1.3×q R4=(Lb+Lc)×1.3×q
C (RM)	1000	-	R3=(La+Lb)×1.3×q	R3=(La+Lc)×1.3×q R4=(Lb+Lc)×1.3×q

支撑力参数	q	M	N
800	0.0039	9.5	4.5
1000	0.0045	11	5



在曼隆蒂升电梯  
没有任何工作  
比安全更重要和紧急!

### 业主和土建承包商应完成的工作

#### What owners and construction contractors should do

1. 井道布置图适用提升高度  $1.5\text{m} \leq H \leq 6\text{m}$ ，允许偏差  $-15\text{mm} \sim +15\text{mm}$ ；
2. 水平跨距  $L > 15\text{m}$  时需加 1 中间支撑，位置基本居中；当水平跨距  $D > 30\text{m}$  时需加 2 中间支撑，位置基本均分；
3. 安装之前，所有孔洞必须设有高度不小于 1.2m 的安全防护围封，并应保证有足够的强度；
4. 底坑内应防水，排水孔应设在墙角处；
5. 根据技术规格表中的要求配备电源，电源应设保护开关、上锁并把线拉到上机房，电源波动范围不应超过  $\pm 7\%$ 。电源零线和接地线应分开，且接地电阻值不大于  $4\Omega$ ；
6. 当扶手中心线与任何障碍物之间的距离小于 500mm 时，用户需在外盖板上方设立一个无锐利边缘的垂直防撞挡板，高度不应小于 300mm。

# 曼隆蒂升电梯

总部：中国·上海市闵行区秀文路 898 号西子国际中心 1 号楼 805 室

邮编：201199

电话：+86 (21) 33030905 传真：+86 (21) 33030903

制造基地：中国·上海市浦东新区临港产业区层林路 685 号

邮编：201306

电话：+86 (21) 50885118 传真：+86 (21) 50885816

## 南部区域

深圳

地址：广东省深圳市南山区粤海街道海岸城东座 2303C

电话：0755-82579759

重庆

地址：重庆市渝北区余溪路 129 号 3 楼

邮编：401147

电话：023-63017819

## 中东区域

江苏

地址：江苏省南京市建邺区嘉陵江东街 8 号科技创新综合体 B4 幢 10 层 1001 室

电话：025-85629177

## 东北区域

地址：辽宁省沈阳市和平区胜利大街南五马路 3 号中驰国际大厦 1015 室

邮编：110000

电话：024-31237666

## 华北区域

北京

地址：北京市朝阳区朝阳门外大街 16 号中国人寿大厦 22 楼南区

邮编：100020

电话：010-52854565

内蒙古

地址：内蒙古呼和浩特市赛罕区丰州路巨海城 6 区 28 栋 2 单元 3 楼东户

邮编：010010

电话：0471-5689148

## 华中区域

湖北

地址：湖北省武汉市武昌区民主路 782 号洪广宝座 A 座 25 楼

邮编：430061

电话：021-50885118

河南

地址：河南省郑州市郑东新区商都路 110 号正商建正东方中心 B 座 1114 室

邮编：450007

电话：021-50885118

江西

地址：江西省南昌市红谷滩新区红谷中大道 1368 号鼎峰中央写字楼 B 单元 1605-1606 室

邮编：330038

电话：0791-86206261 传真：0791-86206261

## 华东区域

浙江

地址：浙江省杭州市上城区市民街 66 号钱塘航空大厦 2 幢 1812 室

邮编：310000

电话：0571-88058518 传真：0571-88058518

福建

地址：福建省厦门市湖里区安岭二路 88 号金凤大厦 3014 室

邮编：361006

电话：0592-5220559 传真：0592-5220559

## 东南区域

安徽

地址：安徽省合肥市新站区萧城路与礼河路交叉口

邮编：320012

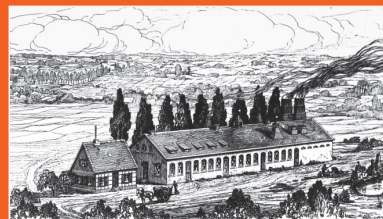
电话：0551-64274918

广西

地址：中国（广西）自由贸易试验区（南宁片区）凯旋路 15 号绿地中心 7 号楼 1315 室

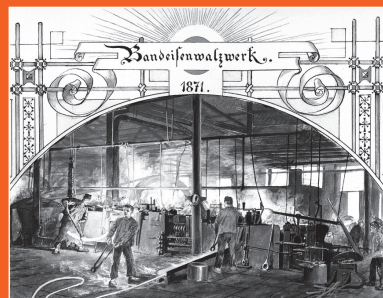
邮编：530201 电话：0771-5084766

1811



Friedrich Krupp 在德国埃森创立了一间工厂，用于制造铸钢、铸币工具、压印模和不锈钢制管模具。由此拉开了蒂森克虏伯 200 多年的辉煌历史。

1871



August Thyssen 成立了蒂森有限公司，后又在杜伊斯堡建立了第一家采煤与炼钢轧钢的联合企业。

1999



克虏伯与蒂森全部全面合并，于德国埃森注册成立蒂森克虏伯股份有限公司。

世界 500 强	500
200 年历史	200
全球三大电梯公司之一	3

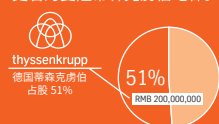
2011

曼隆电梯成立，蒂森克虏伯占 25% 股份。

2015



蒂森克虏伯增资持股至 51%。注册资金逾 2 亿元，公司正式更名为曼隆蒂森克虏伯电梯。



2021



2021 年曼隆蒂森克虏伯完成品牌升级，更名为曼隆蒂升有限公司，并使用全新标识。

(原曼隆蒂森克虏伯的历史)

MAROHN TKE  
Moving Towards Future



400-100-8083  
www.marohn-tke.com

Marohn TK Elevator  
曼隆蒂升保留未经预先通知而更改产品的权利。样本中提供的参数与特性仅供参考，具体产品和服务以合同约定为准。  
MAC 壬寅年·春