

MAROHN TKE

曼隆蒂升商用自动扶梯 Commercial Escalator

MSC series	最大提升高度	18 米
	梯级宽度	600 毫米 - 1,000 毫米
	速度	0.5 米 / 秒

Moving Towards Future

曼隆蒂升电梯，您未来生活的明智之选。

Marohn TK Elevator, Your smart choice for future life.

这是一个最具工匠精神的德国制造典范。

It is an example of German manufacturing at its most artisan.

2020年，老牌电梯工业巨头蒂森克虏伯迎来了升级焕新，华丽转型为一家独立公司——蒂升。

In 2020, the old elevator industry giant ThyssenKrupp Elevator ushered in an upgrade, Transformation into an independent company - TKE.



客户遍布国家

100+



销售额（亿欧元）

80



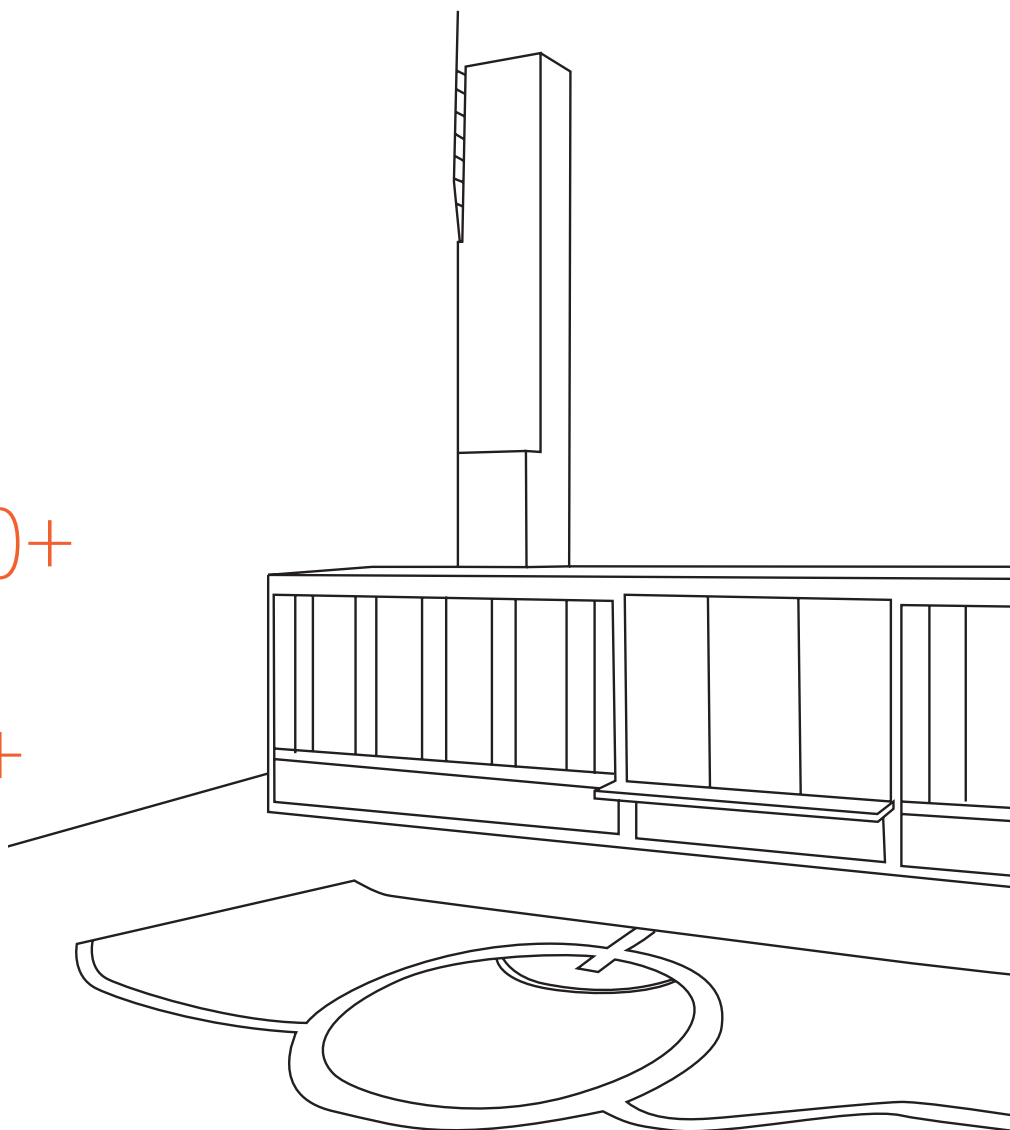
员工人数

50,000+



销售及维保网点

1,000+



愿景与使命

Vision and mission

我们以“缔造智选电梯，助推城市化浪潮”为愿景，致力于在飞速发展的城市化进程中为人们提供安全、顺畅、舒适的体验。

With the vision of "creating intelligent elevators and promoting the wave of urbanization", we are committed to providing people with a safe, smooth and comfortable experience in the rapidly developing urbanization process.

安全
Safety



高效
Efficient



专业
Professional



传承德国匠心 还原德国品质

Inherit the German artisan spirit,
dedicate to the German quality.

曼隆蒂升电梯是由 TK Elevator International Holding B.V. 控股的现代化电梯整机制造企业。

Marohn TK Elevator is a specialized elevator manufacturer held by TK Elevator International Holding B.V.

自 2011 年启用“MAROHN”这一传统德国品牌进入中国市场以来，我们致力于创造贴近市场和客户需求的产品和服务解决方案。

Since entered into China market with the traditional German brand “MAROHN” in 2011, We are committed to creating products and service solutions that are close to the market and customer needs.



MAROHN TKE

我们的历史 (源自 19 世纪的蒂森克虏伯)

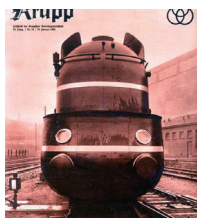
Our History (Originated in the 19th century)

蒂森克虏伯过去 200 多年的技术、管理和全球市场经验，为曼隆蒂升（曼隆蒂森）电梯提供了保持全球领先的重要资本。ThyssenKrupp has more than 200 years of experience in technology, management and global markets, It provides important capital for Marohn TKE (formerly Marohn ThyssenKrupp) elevator to maintain the global leadership.

<p>1847</p> <p>铁路的兴建为铸钢创造了无限的商机。尤其是在 Alfred Krupp (Friedrich Krupp 之子) 成功获得无缝轮毂的专利后，克虏伯工厂迎来了首次发展狂潮。</p>  <p>Railway construction created unlimited business opportunities for cast steel. Especially after Alfred Krupp (son of Friedrich Krupp) successfully obtained the patent for seamless railway, this triggered Krupp's first surge of growth.</p>	<p>1871</p> <p>August Thyssen 成立了蒂森有限公司，后又在杜伊斯堡建立了第一家采煤与炼钢轧钢的联合企业。</p>  <p>August Thyssen established the firm of Thyssen & Co., then set up the first joint enterprise with coal mining, steel making and steel rolling in Duisburg.</p>	<p>1956</p> <p>通过不断收购与兼并，蒂森成为了 20 世纪 60 年代欧洲最大的粗钢生产商，位列当时全球第五。</p>  <p>Through acquisition and merger, in the mid-1960s Thyssen became Europe's biggest steel producer and No.5 in the world.</p>	<p>1976</p> <p>蒂森通过并购成立新的蒂森股份公司，建立了资本货物生产、贸易与服务、不锈钢生产和钢铁生产四大业务板块，同时在标识中加入了莱茵钢铁公司的弧形元素。</p>  <p>Thyssen set up new Thyssen AG through merger, and established four business groups Capital Goods and Manufactured Products, Trading and Services, Stainless Steel, and Steel. Thyssen incorporated the arch of Rheinstahl into the trademark.</p>	<p>2009</p> <p>受全球金融危机影响，蒂森克虏伯将各子公司的业务单元进行重组。公司标识上的文字和图标的联系更加紧密，并形成一个新的统一架构。</p>  <p>Affected by the global financial crisis, thyssenkrupp restructured the business and the text and icon on the trademark were closer, which formed a brand new logo.</p>
<p>1811</p> <p>Friedrich Krupp 在德国埃森创立了一间工厂，用于制造铸钢、铸币工具、压印模和不锈钢制管模具。</p>  <p>Friedrich Krupp established a factory in Essen, Germany for making of cast steel, coining die and stainless steel pipe mould.</p>	<p>1859</p> <p>来自普鲁士军事局的枪管锭订单为克虏伯的第二大主产业奠定了坚实的基础。不久后，克虏伯更开启了全新的火炮产业。</p>  <p>The gun barrel ingot order from the Prussian military authorities was a breakthrough in the development of Krupp's second major production segment. Shortly afterwards Krupp started production of complete artillery.</p>	<p>1875</p> <p>Alfred Krupp 确立以三个叠加的火车轮毂作为克虏伯的公司标识。</p>  <p>Alfred Krupp chose three superposed railway tires as Krupp trademark.</p>	<p>1999</p> <p>克虏伯与蒂森全部全面合并。新公司标识中融合了蒂森弧形和克虏伯圆环的标志性元素。</p>  <p>thyssenkrupp AG is officially registered in Essen, German. The new trademark was a blend of old Thyssen arch and Krupp circle element.</p>	<p>2015</p> <p>蒂森克虏伯历经 200 年历史后迎来全新的品牌标识的统一与革新。新标识既包含了蒂森克虏伯的历史，同时标志的对称性和复杂性代表了精密的工程技术。</p>  <p>After 200 years history, thyssenkrupp ushered in the unity and innovation of its brand new logo. The new logo contained the history, the symmetry and complexity also represented the precision of technology.</p>

蒂森克虏伯的中国发展史

thyssenkrupp in China



▶ 1886

克虏伯为修建京广铁路向中国供应了 1,500 吨铁路钢轨。此后又陆续将百余台蒸汽机车运往中国。

Krupp supplied 1,500t. of rail steels for the construction of Beijing-Guangzhou railway. Then it shipped more than one hundred locomotives to China.



▶ 1896

清总理大臣李鸿章受邀带领第一支中国代表团访问德国，中德的贸易序章正式拉开。

Li Hongzhang, the Prime Minister of Qing dynasty, was invited to visit Germany with the first Chinese delegation, which opened the prologue for the Sino-German trade.



▶ 1937

位于上海外滩的中国银行购入数百吨克虏伯钢材，用于制造保管箱和库门，创造了当时的“远东第一”银行。

The Bank of China which was located at Shanghai Bund procured hundreds of tons of Krupp steel to produce safe and vault door, making it the Far East No. 1 bank at the time.



▶ 1975

新中国成立后，蒂森公司和克虏伯公司参加了在京举办的德国技术展览会。周恩来总理会见了原克虏伯基金会主席 Berthold Beitz 博士。

After the founding of New China, Thyssen and Krupp company participated in the German technology exhibition held in Beijing. Premier Zhou Enlai met with Dr. Berthold Beitz, former chairman of Krupp foundation.



▶ 1995

国家主席江泽民在访德期间参观了克虏伯集团。

President Jiang Zemin made a tour to Krupp during his visit in Germany.



▶ 2002

德国总理施罗德与朱镕基总理进行会晤，并共同乘坐上海磁悬浮列车，见证由蒂森克虏伯创造的 430 公里/小时的速度奇迹。

German Chancellor Gerhard Schröder met with Premier Zhu Rongji, and took the Shanghai maglev train together, witnessing the miracle speed of 430km/h created by thyssenkrupp.



▶ 2014

国家主席习近平在德国杜塞尔多夫会见包括蒂森克虏伯首席执行官在内的中德经济交流顾问委员会成员。

President Xi Jinping met with the members of Sino-German Economic Exchange Advisory Committee in Dusseldorf, Germany, including the CEO of thyssenkrupp.

蒂升的最新电梯技术

Advanced E&E technology of TKE

ACCEL

通过运用磁悬浮列车的线性马达技术，ACCEL 可方便乘客快速抵达地铁站。在机场航站楼，ACCEL 能将登机口之间的通行时间大幅缩短三分之二。

TKE's ACCEL provides an efficient solution by improving access to metro stations with linear motors technology applied in the magnetic train Transrapid. In airport terminals, it can cut current transit times between gates by two-thirds.

MAX

MAX 解决方案不仅能够缩短人们的候梯时间，提高建筑物的运输效率，从而缓解城市人口的增长压力，还可通过识别电梯的需求信息，逐步改变行业提供维保服务的方式。

Max solution can save the waiting time for elevator, enhance the transportation efficiency to ease stress of increasing urban populations. It also makes it possible to change the way the elevator industry offers maintenance services by identifying service needs elevator "tell".

TWIN

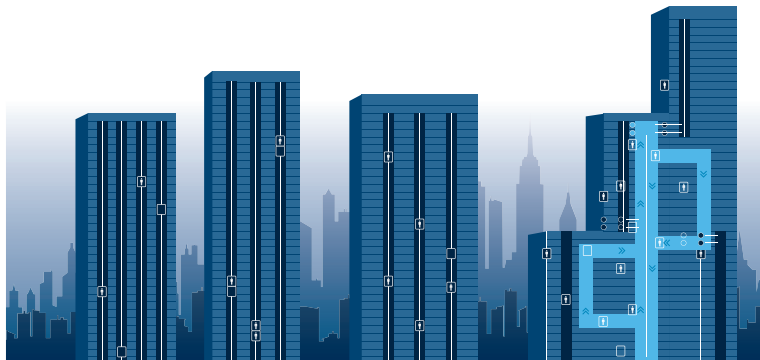
TWIN 双子电梯系统是世界上首个将两个轿厢独立运行于同一井道的电梯系统。目的楼层选择控制系统 (DSC) 能够优化交通流量，使乘客更快更安全地到达目的地。

Implemented for the first time anywhere in the world by thyssenkrupp, TWIN system uses two independent elevators in one shaft. The Destination Selection Control (DSC) system optimizes traffic flows and helps passengers reach their destination fast and safely.

MULTI

MULTI 电梯技术允许多台轿厢在同一个井道中进行垂直和水平移动，极大提升了建筑物在高度、形状和用途等方面的设计自由度。

MULTI elevator technology makes several cars in the same shaft moving vertically and horizontally, permitting buildings to adopt different heights, shapes, and purposes.



MSC 商用自动扶梯

MSC Commercial Escalator

曼隆蒂升按照欧洲工程质量标准制造自动扶梯的驱动、链条与梯级系统，对所有扶梯主要部件进行严格测试，确保可靠的质量。

采用先进工艺，我们将减速箱的载荷分散在具有更大接触面积的啮合齿面上，减少摩擦的同时也令驱动效率更高，实现扶梯的平稳运行。

环附压带式扶手具有导向和驱动系统，扶手驱动轮带有聚氨酯外层，保证扶手带不会因过压产生变形，从而有效延长其使用寿命。

围裙板、内外盖板及楼层盖板精选耐用型材，令 MSC 经得住时间的考验。

超过 20 项配置使我们的自动扶梯能灵活应对挑战，适应各种气候条件和恶劣工况。

无论是在繁忙的机场，时尚购物中心，奢华的五星级酒店，还是高雅的现代艺术馆，人们都期望享受静谧、舒适、平稳的乘梯时间。秉承德国工业设计理念，曼隆蒂升 MSC 自动扶梯采用独特的降噪技术与 6 极低速电机，将扶梯的运行噪音控制在最低范围。成熟稳定的工装模具，确保每道工序的有序进行。我们用超越行业的质量管理要求装配每台自动扶梯。在按照实际使用条件测试运行后，我们的产品由物流中心发至项目现场，再由专业的技术人员进行调试，确保优异的运行质量。

Marohn TK Elevator manufactures the escalator drive, chain and step system according to the European engineering quality standards and conduct strict testing for all the main parts to ensure the reliable quality.

With advanced technology, we disperse the load of reduction gearbox in the meshing tooth surfaces with larger contact area, which can reduce the friction and also improve the drive efficiency to realize the smooth running of the escalator.

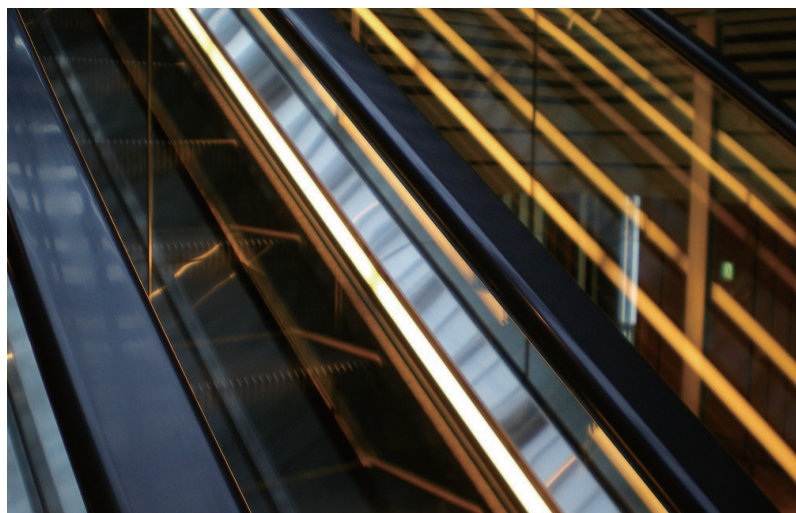
The ring attached pressure belt handrail has the guidance and drive system. The polyurethane coating out of the drive wheel will ensure the hand strap not deformed due to overpressure and extend its lifespan.

The skirting, inner and outer deck as well as the floor deck adopt selected durable materials, so that the MSC can completely stand the test of time.

Our escalator can flexibly counter with the challenges and adapt to various climate conditions and harsh working condition with more than 20 configurations.

No matter in the busy airport, fashion shopping center, luxurious five-star hotels, or the elegant museums of modern art, people expect to enjoy a quiet, comfortable and smooth escalator riding time. Adhering to the German industrial design concept, Marohn TK Elevator MSC escalator adopts the unique noise reduction technology and 6 pole low-speed motor to control the running noise of the escalator in minimum. The mature and stable tooling mold can ensure that every working process carried out in an orderly manner.

We apply the quality management requirements beyond industry standard to assemble each escalator. After the test run in accordance with the actual using conditions, our products are delivered to the project site by the logistics center, and debugged by professional technical personnel to achieve excellent operation quality.



定制设计

Customized design

兼具美观与功能，MSC 自动扶梯为您带来更多选择的部件与组合方案，如扶手带和扶手带型材、内外盖板、梯级和梯级边框、扶手支撑玻璃、围裙板和围裙板毛刷等。

不同颜色的照明选择，也为各类建筑营造出其专属的氛围。除了扶手带与围裙板照明外，特殊的腹板照明和内部照明，都可成为发光设计的典范，使自动扶梯在整个建筑中熠熠生辉。而当建筑内部风格无法满足扶梯出入口地面光照度达 50 勒克斯时，出于安全考虑，我们建议您选择 MSC 的梳齿板照明。

Combined aesthetics with practicality, MSC can bring you more choices of parts and combination, such as the handrail, handrail material, inner and outer deck, steps, step border, handrail support glass, skirting and skirting brush, etc.

Lighting options with different colors also build an exclusive atmosphere for various buildings. Besides the handrail and skirting lighting, the special web and interior lighting can both become the paradigm of the luminous design and make the escalator shines in the entire building. While when the building interior style cannot meet the requirement that the escalator entrance ground illumination up to 50 lux, we recommend you to choose the MSC comb lighting for safety reason.



自动扶梯的不同布置方式，不仅为客流带来变化，也能为建筑带来勃勃生机。

我们的扶梯团队根据建筑的结构与类型，客流的方向与强度提供专业的分析、布置、选型与配置建议，为您推荐满足需求的最佳解决方案。通过高效的客流引导，为您的建筑增添更多销售增长、客流效率与附加价值。自动扶梯的不同布置方式，也会为建筑的内部空间带来重新分割与定义。平行或交叉，断续或连续，都是展现品味、彰显风格的机会。

Different layouts of the escalator not only bring changes to the people flow, but also bring vitality to the building.

Our escalator team can provide professional analysis, layout, product and configuration advices according to the building structure and type, and recommend you the best solution that meets your demands. Through the high-efficient traffic guidance, we can contribute more sales growth, people flow efficiency and added value to your building.

Different layouts of the escalator will also bring the re-partition and definition of the building internal space. Parallel or intersecting, intermittent or continuous, any of them can show the taste and highlight the style of you and your building.

安全第一

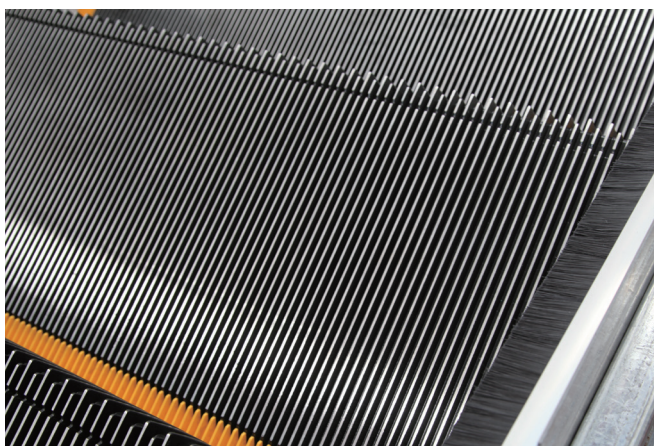
Safety priority



MSC 自动扶梯除了完全符合国标 GB16899 的各项最新标准外，在此基础上更增加了多项安全配置，为您提供更贴心的保护。我们为提升高度超过 6 米以上的自动扶梯标配驱动链断链保护，避免扶梯因驱动链断链发生上行反向或下行加速运行时造成乘客跌倒甚至划伤。

供电相位保护是 MSC 自动扶梯的又一项标准安全配置，进一步防止自动扶梯逆转运行，保障乘客安全。选配的接近开关可在紧急情况发生时立即启动安全制动器，防止突发逆行。此外，长轴设计的梯级轴可吸收梯级表面的绕度压力，将乘客安全地送达目的地。

针对火灾，MSC 可根据要求设置 FAS 系统接口，在接收火警信号时制停扶梯。



MSC is completely compliance with all the latest standards of the national GB16899. In addition, a number of security configurations are added to provide you with more considerate protection.

We equip the escalator with traveling height over 6 meters with drive chain guard as a standard configuration, so as to avoid the upward reverse running or downward acceleration running due to the breakage of the drive chain and the falling or even scratching of the passengers.

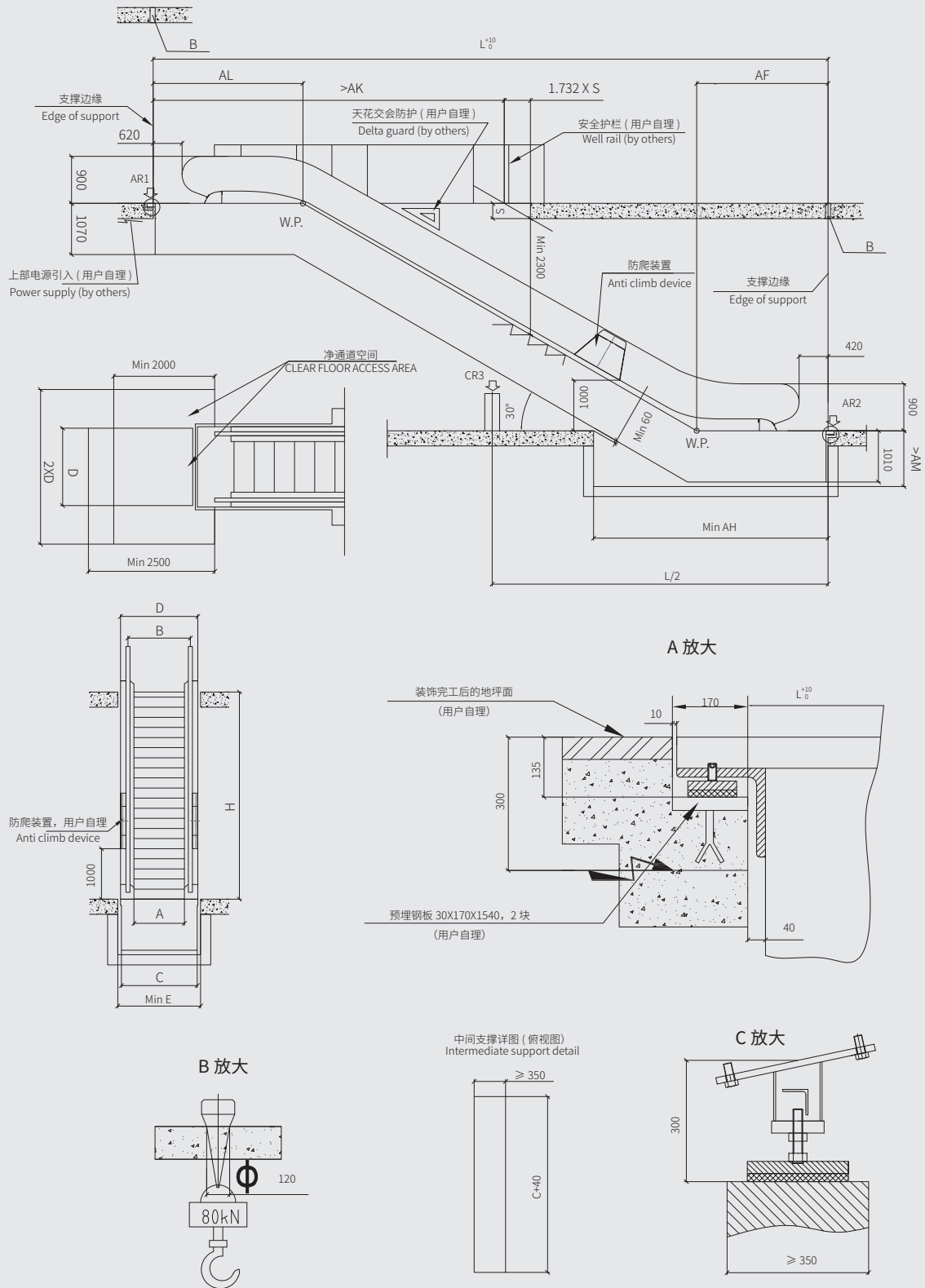
The power supply phase protection is another standard security configuration of MSC, which can further prevent the reversal operation to ensure the safety of passengers. The optional proximity switch can immediately start the safety brake in emergency and prevent the sudden reverse running.

In addition, the lone step shaft can absorb the winding pressure on the step surface and deliver the passengers safely to the destination.

For the fire, MSC can set the FAS system interface as required to stop the escalator when receiving the fire alarm signal.

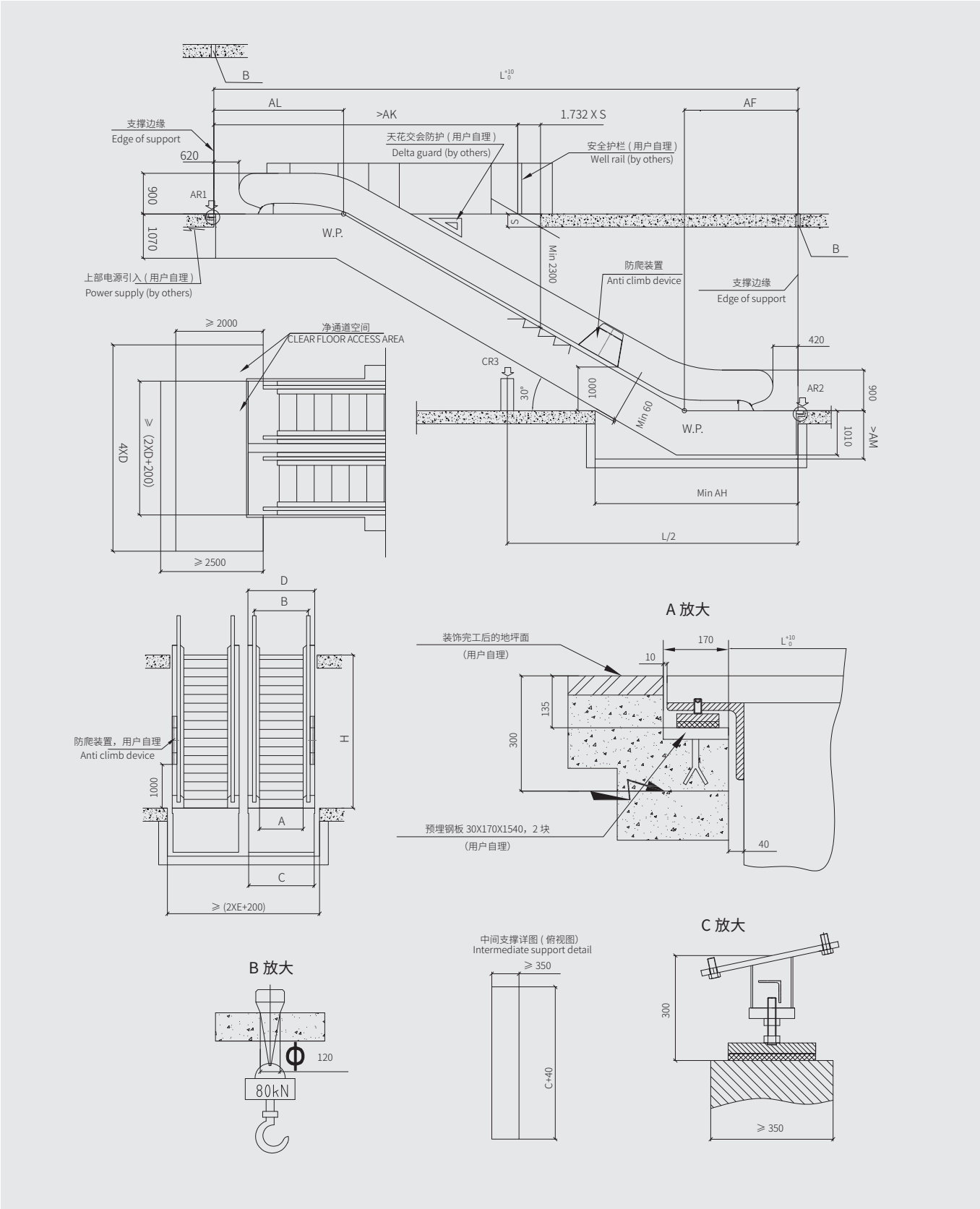
井道布置图 (30°单梯)

Layout (30°single)



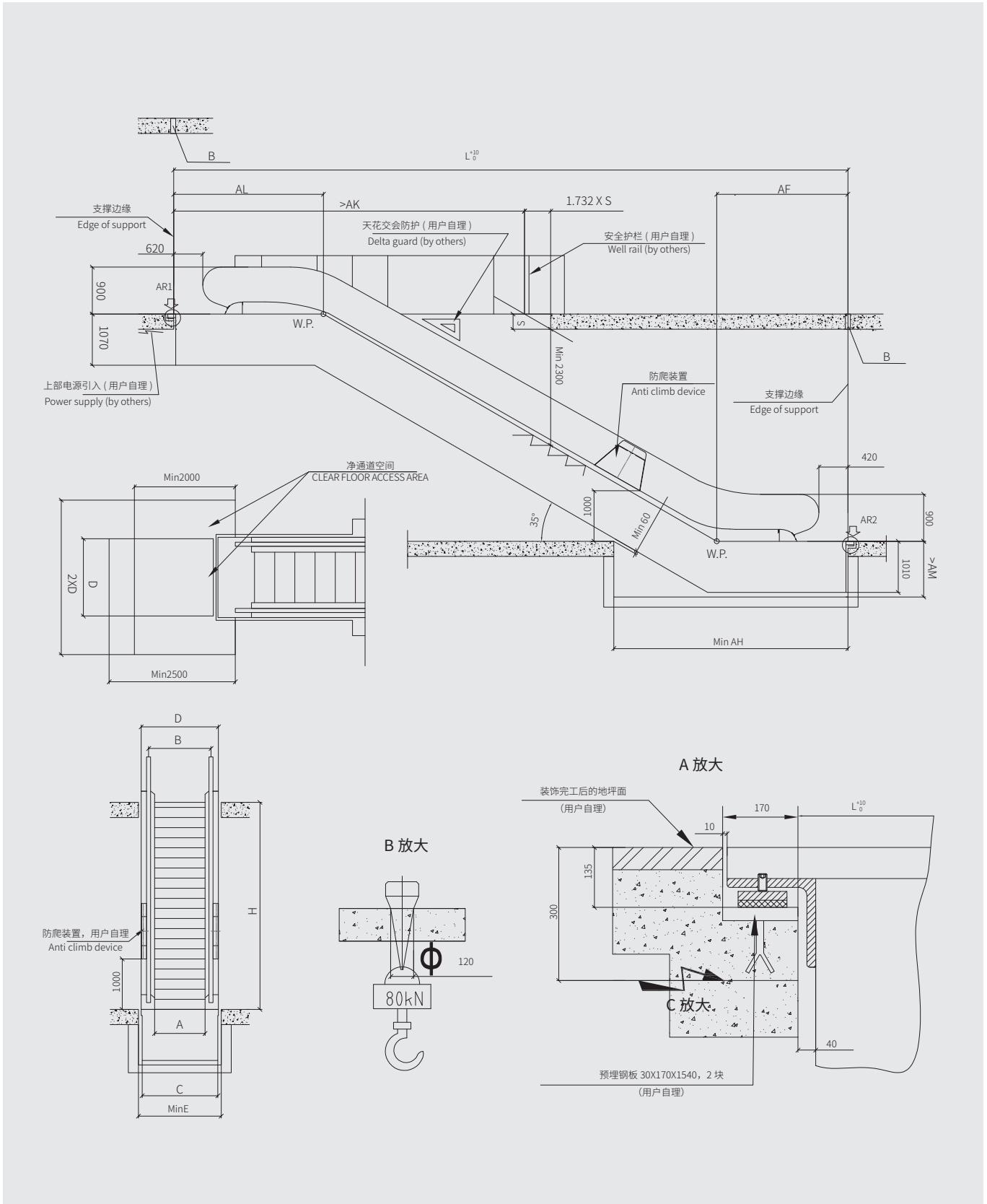
井道布置图 (30°并列)

Layout (30°parallel)



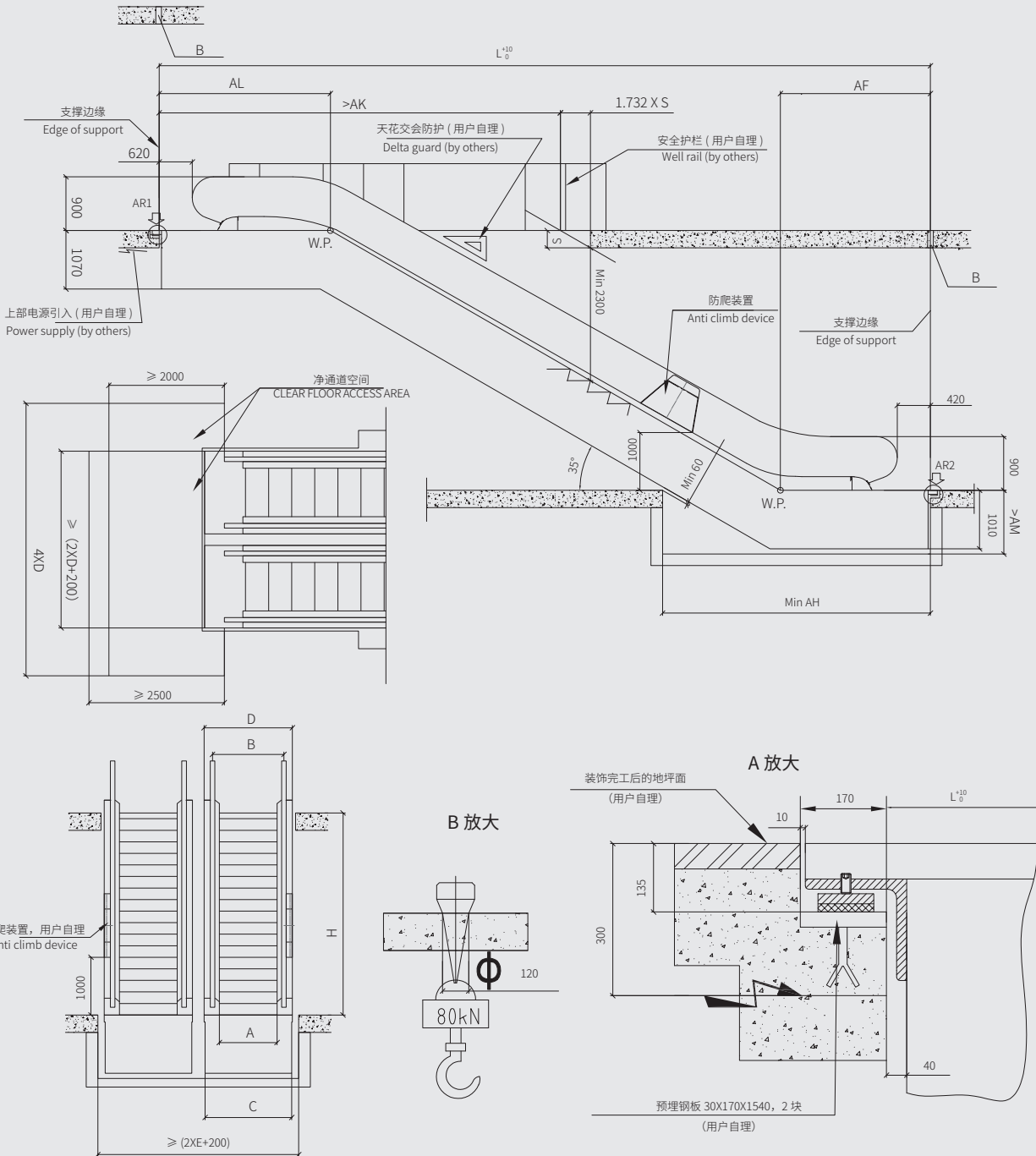
井道布置图 (35°单梯)

Layout (35° single)



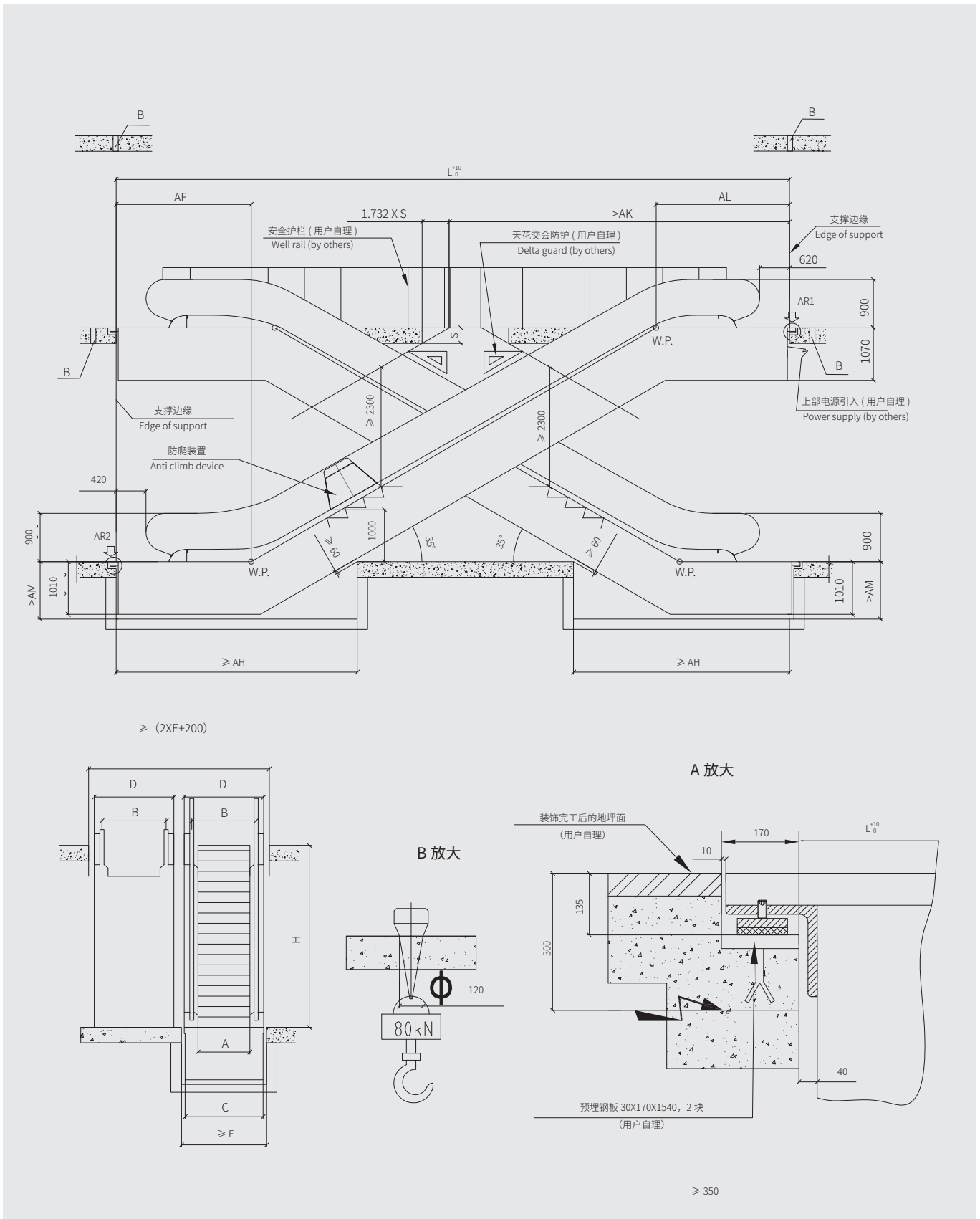
井道布置图 (35°并列)

Layout (35°parallel)



井道布置图 (35°交叉)

Layout (35° across)



技术规格表

Technical specification

	m/s	mm	mm	mm	mm	mm	mm	mm	mm	mm	mm	mm
倾斜角度 α Angle	速度 Speed"	梯级宽度 A Step width	提升高度 H Rise	底坑长度 AH Length of pit	底坑宽度 E Width of pit	底坑深度 AM Depth of pit	扶手带中心距 B Handrail centerdistance"	桁架外宽 C Width of supporting structure	扶梯外宽 D Width of autowalk	跨距 (支撑端间距) L Distance between supports	桁架倾 斜段高 度	扶手带 高度
35°	≤ 0.5	600	1500 ≤ H ≤ 6000	4100	1200	室内 1100 室外 1350	838	1100	1140	1.428*H+5105+417	930	900
35°	≤ 0.5	800	1500 ≤ H ≤ 6000	4100	1400	室内 1100 室外 1350	1038	1300	1340	1.428*H+5105	930	900
35°	≤ 0.5	1000	1500 ≤ H ≤ 6000	4100	1600	室内 1100 室外 1350	1238	1500	1540	1.428*H+5105	930	900
30°	≤ 0.65	600	1500 ≤ H ≤ 6000	4300	1200	室内 1100 室外 1350	838	1100	1140	1.732*H+4965+417	930	900
30°	≤ 0.65	800	1500 ≤ H ≤ 6000	4300	1400	室内 1100 室外 1350	1038	1300	1340	1.732*H+4965	930	900
30°	≤ 0.65	1000	1500 ≤ H ≤ 6000	4300	1600	室内 1100 室外 1350	1238	1500	1540	1.732*H+4965	930	900
30°	≤ 0.65	800	6000 < H ≤ 18000	4900	1460	室内 1200 室外 1450	1038	1360	1400	1.732*H+5765	1030	900
30°	≤ 0.65	1000	6000 < H ≤ 18000	4900	1660	室内 1200 室外 1450	1238	1560	1600	1.732*H+5765	1030	900

业主和土建承包商应完成的工作

What owners and construction contractors should do

1. 倾斜角度为 30° 的自动扶梯，井道布置图适用提升高度 $3m \leq H \leq 8m$ ，允许偏差 $-15mm \sim +15mm$ ；倾斜角度为 35° 的自动扶梯，井道布置图适用提升高度 $H \leq 6m$ ，允许偏差 $-15mm \sim +15mm$ ；
2. 水平跨度 $L > 15.3m$ 时需加 1 中间支撑，位置基本居中；
3. 安装之前，所有孔洞必须设有高度不小于 1.2m 的安全防护围封，并应保证有足够的强度；
4. 底坑内应防水，排水孔应设在墙角处；
5. 根据技术规格表中的要求配备电源，电源应设保护开关、上锁并把线拉到上机房，电源波动范围不应超过 $\pm 7\%$ 。电源零线和接地线应分开，且接地电阻值不大于 4Ω ；
6. 当扶手中心线与任何障碍物之间的距离小于 500mm 时，用户需在外盖板上方设立一个无锐利边缘的垂直防撞挡板，高度不应小于 300mm。



	KN	mm	KN	KN
支反力 Reactions	梯级宽度 Step width	2 个支撑点 2 supporting points	3 个支撑点 3 supporting points	
A (RU/RD)	600	$R1=3.5 \times L+15.5$ $R2=3.5 \times L+10$	$R1=4.1 \times L2+15.5$ $R2=4.1 \times L1+7.8$	
A (RU/RD)	800	$R1=4 \times L+17$ $R2=4 \times L+11$	$R1=4.5 \times L2+16.1$ $R2=4.5 \times L1+7.8$	
A (RU/RD)	1000	$R1=4.5 \times L+18.5$ $R2=4.5 \times L+11.5$	$R1=5 \times L2+17.5$ $R2=5 \times L1+8.5$	
C (RM)	600	-	$R3=4.25 \times L+9.5$	
C (RM)	800	-	$R3=4.5 \times L+10.5$	
C (RM)	1000	-	$R3=5.2 \times L+11.5$	



在曼隆蒂升电梯
没有任何工作
比安全更重要和紧急！

曼隆蒂升电梯

总部：中国·上海市闵行区秀文路 898 号西子国际中心 1 号楼 805 室

邮编：201199

电话：+86 (21) 33030905 传真：+86 (21) 33030903

制造基地：中国·上海市浦东新区临港产业区层林路 685 号

邮编：201306

电话：+86 (21) 50885118 传真：+86 (21) 50885816

南部区域

深圳

地址：广东省深圳市南山区粤海街道海岸城东座 2303C

电话：0755-82579759

重庆

地址：重庆市渝北区余溪路 129 号 3 楼

邮编：401147

电话：023-63017819

中东区域

江苏

地址：江苏省南京市建邺区嘉陵江东街 8 号科技创新综合体 B4 幢 10 层 1001 室

电话：025-85629177

东北区域

地址：辽宁省沈阳市和平区胜利大街南五马路 3 号中驰国际大厦 1015 室

邮编：110000

电话：024-31237666

华北区域

北京

地址：北京市朝阳区朝阳门外大街 16 号中国人寿大厦 22 楼南区

邮编：100020

电话：010-52854565

内蒙古

地址：内蒙古呼和浩特市赛罕区丰州路巨海城 6 区 28 栋 2 单元 3 楼东户

邮编：010010

电话：0471-5689148

华中区域

湖北

地址：湖北省武汉市武昌区民主路 782 号洪广宝座 A 座 25 楼

邮编：430061

电话：021-50885118

河南

地址：河南省郑州市郑东新区商都路 110 号正商建正东方中心 B 座 1114 室

邮编：450007

电话：021-50885118

江西

地址：江西省南昌市红谷滩新区红谷中大道 1368 号鼎峰中央写字楼 B 单元 1605-1606 室

邮编：330038

电话：0791-86206261 传真：0791-86206261

华东区域

浙江

地址：浙江省杭州市上城区市民街 66 号钱塘航空大厦 2 幢 1812 室

邮编：310000

电话：0571-88058518 传真：0571-88058518

福建

地址：福建省厦门市湖里区安岭二路 88 号金凤大厦 3014 室

邮编：361006

电话：0592-5220559 传真：0592-5220559

东南区域

安徽

地址：安徽省合肥市新站区萧城路与礼河路交叉口

邮编：320012

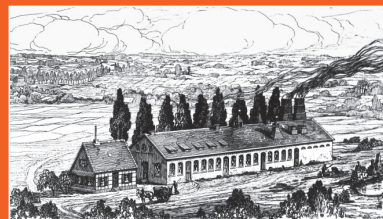
电话：0551-64274918

广西

地址：中国（广西）自由贸易试验区（南宁片区）凯旋路 15 号绿地中心 7 号楼 1315 室

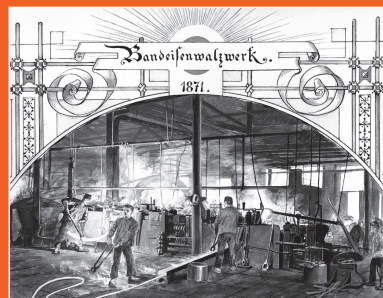
邮编：530201 电话：0771-5084766

1811



Friedrich Krupp 在德国埃森创立了一间工厂，用于制造铸钢、铸币工具、压印模和不锈钢制管模具。由此拉开了蒂森克虏伯 200 多年的辉煌历史。

1871



August Thyssen 成立了蒂森有限公司，后又在杜伊斯堡建立了第一家采煤与炼钢轧钢的联合企业。

1999



克虏伯与蒂森全部全面合并，于德国埃森注册成立蒂森克虏伯股份有限公司。

世界 500 强	500
200 年历史	200
全球三大电梯公司之一	3

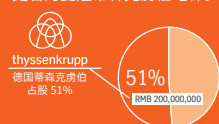
2011

曼隆电梯成立，蒂森克虏伯占 25% 股份。

2015



蒂森克虏伯增资持股至 51%。注册资金逾 2 亿元，公司正式更名为曼隆蒂森克虏伯电梯。



2021



2021 年曼隆蒂森克虏伯完成品牌升级，更名为曼隆蒂升有限公司，并使用全新标识。

(原曼隆蒂森克虏伯的历史)

MAROHN TKE
Moving Towards Future



400-100-8083
www.marohn-tke.com

Marohn TK Elevator
曼隆蒂升保留未经预先通知而更改产品的权利。样本中提供的参数与特性仅供参考，具体产品和服务以合同约定为准。
MSC 壬寅年·春